

M. A. Mutschler · R. W. Doerge · S.-C. Liu
J. P. Kuai · B. E. Liedl · J. A. Shapiro

QTL analysis of pest resistance in the wild tomato *Lycopersicon pennellii*: QTLs controlling acylsugar level and composition

Received: 29 June 1995 / Accepted: 6 October 1995

Abstract Some accessions of *Lycopersicon pennellii*, a wild relative of the tomato *Lycopersicon esculentum*, are resistant to a number of important pests of cultivated tomato due to the accumulation of acylsugars, which constitute 90% of the exudate of type-IV trichomes in *L. pennellii* LA716. An interspecific F₂ population, created by the cross *L. esculentum* × *L. pennellii* LA 716, was surveyed for acylsugar accumulation and subjected to RFLP/QTL analysis to determine the genomic regions associated with the accumulation of acylglucoses, acylsucroses, and total acylsugars, as well as with acylglucoses as a percentage of total acylsugars (mole percent acylglucoses). Data were analyzed using MAP-MAKER/QTL with and without a log₁₀ transformation. A threshold value of 2.4 (default value for MAP-MAKER/QTL) was used, as well as 95% empirically derived threshold values. Five genomic regions, two on chromosome 2 and one each on chromosomes 3, 4 and 11, were detected as being associated with one or more aspects of acylsugar production. The *L. esculentum* allele is partially dominant to the *L. pennellii* allele in the regions on chromosomes 2 and 11, but the *L. pennellii* allele is dominant in the region on chromosome 3. Throughout this study, we report the comparative effects of analytical methodology on the identification of

acylsugar QTLs. Similarities between our results and published results for the genus *Solanum* are also discussed.

Key words Acylsugars · Pest resistance · QTL analysis · Tomato · RFLP

Introduction

Cultivated crops are attacked by a large number of insect pests which damage plants and reduce yields. Use of pesticides is increasingly limited by the evolution of pesticide-resistant insects, withdrawal of chemicals due to loss of label, and increasing health/environmental concerns. The incorporation of resistance into crop species from their wild relatives provides an alternative method of pest control.

Lycopersicon pennellii (Corr.) D'Arcy accession LA716, a wild relative of the cultivated tomato *L. esculentum* (Mill.), is resistant to several insect species, including greenhouse whitefly (*Trialeurodes vaporariorum*), carmine and two-spotted spider mites (*Tetranychus cinnabarinus* and *T. urticae*), and the potato aphid (*Macrosiphum euphorbiae*) (Gentile and Stoner 1968; Gentile et al. 1968, 1969). The multiple pest resistance of *L. pennellii* LA716 is mediated by acylsugars exuded by type-IV glandular trichomes on the surface of virtually all the aerial portions of these plants. The acylsugars act as feeding deterrents for potato aphid, green peach aphid (*Myzus persicae*), tomato fruitworm (*Helicoverpa zea*, formerly *Heliothis zea*), and beet armyworm (*Spodoptera exigua*), and as feeding and oviposition deterrents for the leafminer (*Liriomyza trifolii*) and silverleaf whitefly strain B (*Bemisia argentifolii* formerly sweetpotato whitefly, *B. tabaci*) (Goffreda et al. 1989; Hawthorne et al. 1992; Juvik et al. 1993; Rodriguez et al. 1993; Liedl et al. 1995). Acylsugars also exert a detrimental effect on larval development of tomato fruitworm, and on both larval development and survival of

Communicated by F. Salamini

M. A. Mutschler (✉) · R. W. Doerge¹ · S.-C. Liu² · J. P. Kuai · B. E. Liedl³ · J. A. Shapiro⁴
Department of Plant Breeding and Biometry, Cornell University, Ithaca, N.Y. 14853, USA

R. W. Doerge · S.-C. Liu · J. P. Kuai
contributed equally to the paper, and we ordered randomly

Present addresses:

¹ Purdue University, Statistics and Agronomy Depts, West Lafayette, IN 47907-1399, USA

² 3511 Meadway Drive, Houston TX 77082, USA

³ Central College, Biology Department, Pella, IA 50219, USA

⁴ BHN Research, 16750 Bonita Beach Road, Bonita Springs, FL 33923, USA

beet armyworm (Juvik et al. 1993). Acylsugars have been identified in other members of the genus *Lycopersicon*, as well as in species of other Solanaceous genera including *Solanum*, *Nicotiana* and *Datura* (Schumacher 1970; King and Calhoun 1988; King et al. 1988, 1990), and may also play a role in insect and disease resistance in some of these other species (Severson et al. 1985; Neal et al. 1990; Kennedy et al. 1992; Buta et al. 1993).

The acylsugars of *L. pennellii* LA716 are a complex chiefly comprised of 2, 3, 4-tri-*O*-acylated glucose esters possessing C₄ to C₁₂ fatty acids, which constitute approximately 90% of the *L. pennellii* LA716 type-IV trichome exudate (Fobes et al. 1985). There is considerable variation among accessions of *L. pennellii* for the level of acylsugars produced, and the type of sugar (glucose or sucrose) and fatty acids incorporated into the acylsugars (Shapiro et al. 1994). Cultivated tomato does not accumulate detectable levels of acylsugars, but *L. esculentum* × *L. pennellii* LA716 F₁ plants accumulated moderate levels of 3', 3, 4-tri-*O*-acylsucroses, 3', 3, 4, 6-tetra-*O*-acylsucroses and 2, 3, 4-tri-*O*-acylglucoses, in approximately a 60:40 ratio of acylsucroses to acylglucoses, respectively (J. C. Steffens, personal communication). The presence or absence of the type-IV glandular trichomes that exude acylsugars is inherited simply, and controlled by at least two unlinked genes, in crosses between *L. pennellii* LA716 and *L. esculentum* (Lemke and Mutschler 1984).

Breeding for oligogenic (quantitative) traits can be problematic due to difficulties in accurately screening for the trait on a single-plant basis, and because few plants in a segregating population possess all of the genes required for trait expression. Non-fecundity and the segregation distortion inherent in many interspecific crosses (Zamir and Tadmor 1986; Liu 1994; Mutschler and Liedl 1994; Liu et al. 1995) can further impede breeding when the desired trait must be transferred from a wild to a domesticated species. The highly saturated RFLP map of tomato, which possesses over 1000 markers providing resolution of about 1 to 2 cM (Tanksley et al. 1992), permits the systematic dissection of quantitative traits and the further identification and transfer of chromosomal regions associated with such traits (Tanksley 1993).

It is clear that acylsugars play an important role in pest resistance in the Solanaceae. While acylsugars are primarily found in wild species, their transfer to cultivated species promises to contribute greatly to an improvement of crop resistance to insect pests, and thus a reduction in the dependence on synthetic chemicals for insect control. Information on the genetic control of acylsugar production and the genomic regions associated with this production would facilitate the transfer of this trait to cultivated tomato. The purpose of this work is to determine, within *Lycopersicon*, the genomic regions associated with the accumulation and composition of acylsugars.

Materials and methods

Plant materials

An F₂ population was generated from an *L. esculentum* × *L. pennellii* F₁, of which the *L. esculentum* parent was New Yorker^{LP4} (NY^{LP4}), a plant derived from the *L. esculentum* line New Yorker but containing the cytoplasm of *L. pennellii* LA716 (Lp) (Mutschler 1990), and the *L. pennellii* parent was *L. pennellii* LA716 (PI246502). Two hundred and thirty four F₂ plants, and the parental and F₁^{LP4} controls, were grown under normal greenhouse conditions.

Acylsugar assays

Control and F₂ plants were surveyed for the accumulation of acylsugars at 16 weeks of age. Three samples were taken per plant to provide for replication. The collection of each sample involved rinsing 2–3 leaflets in 10 ml of methylene chloride in a scintillation vial. The leaflets were saved and their surface area was measured with a LI-COR model LI 3000 area meter to estimate the acylsugar accumulation per unit area. The rinsates were backwashed with water to remove free sugars, dried, then resuspended in 2 ml of methanol. The acylsugar content of the samples was then measured by a modified Nelson's assay for reducing sugars, as described by Goffreda et al. (1990). The traits measured directly by the assay are the accumulation of acylglucoses and of total acylsugars. These data are used to calculate the accumulation of acylsucroses and acylglucoses as a percentage of total acylsugars (mole percent acylglucoses). Since the molecular weights of acylsucroses and acylglucoses are considerably different, measurements of the accumulation of acylsucroses and acylglucoses were considered in nmol/cm² leaflet area, to provide for an unbiased estimation of the mole percent acylglucoses. The values used for each of the acylsugar traits is the average of the results from the three samples obtained per plant.

Mapping

Genomic DNA was extracted from the F₂ plants, each of the parents, and the interspecific F₁, using the method of Doyle and Dickson (1987). After all the acylsugar samples and a portion of the DNA samples were collected, a mechanical failure flooded one portion of the greenhouse, killing the F₂ plants in that section. Consequently, while sufficient DNA for complete RFLP analysis was available for the surviving 144 plants, only limited quantities of DNA were available for the killed portion of the F₂ population. Therefore, the initial linkage map was created, and acylsugar-related regions were identified, using the subset of 144 F₂ plants. DNA of these 144 plants and an additional 52 plants from the F₂ plants from the F₂ population (total of 196 F₂ plants) was used for fine mapping the regions for which the initial analysis indicated an association with acylsugar production. Approximately 20 µg of DNA from each plant were digested with restriction enzymes (*Bst*NI, *Dra*I, *Eco*RI, *Hae*III, *Hind*III and *Xba*I), following the manufacturer's suggested conditions, run on 0.8% agarose gels at 20 V overnight or 90 V for 4–5 h (Maniatis et al. 1982), and blotted onto GeneScreen Plus membrane (NEN, DuPont) or HybondTM-N⁺ membrane (Amersham) as suggested by the manufacturers.

One hundred and fifty mapping clones of known chromosomal locations (supplied by Dr. S. D. Tanksley), chosen to give markers covering almost the entire genome, were used to create a map of the F₂ populations using MAPMAKER/EXP (Lander et al. 1987). Insert DNAs were labeled using random priming (Feinberg and Vogelstein 1983, 1984). Southern analysis was performed essentially as in Maniatis et al. (1982). Ambiguous genotypes were treated as missing data. An error-detection function of the computer software MAPMAKER/EXP v.3.0 (Lincoln and Lander 1992; Lincoln et al. 1992 a) was used to identify candidates for further typing examination and correction.

Genome composition

The computer program HYPERGENE v.0.9 (Young and Tanksley 1989) was used to estimate the percentage of the total genome comprised of *L. esculentum* genes. The percentages of the total genome that were homozygous for *L. esculentum* (EE), heterozygous for *L. esculentum* and *L. pennellii* (EP), and homozygous for *L. pennellii* (PP) were also estimated for each F₂ plant based on the genotypes of the RFLP markers and the centimorgan distances between these markers obtained from the linkage analysis. The frequency distribution of the percent *L. esculentum* genome composition and the percentages of EE, EP, and PP in the genome were plotted. Two-sided tests were used to test both the difference between population means of percent genome composition and the difference between the mean of percent genome composition and its expected value (MINITAB 1991).

Linkage-map analysis

Genetic linkage maps were constructed using the computer program MAPMAKER/EXP v.3.0 (Lander et al. 1987; Lincoln et al. 1992 b) on a Sun Sparc 2.0 workstation. All pairs of linked markers were first identified by the 'group' command. Loci orders within linkage groups were verified by the 'ripple' command after initial loci order was achieved through the 'order' command. Distances between markers were estimated by the method of maximum-likelihood multi-point analysis. The chromosomal affiliation of each linkage group was established by comparison of the chromosomal affiliation of the markers contained within the linkage group with their locations in the published tomato linkage map (Tanksley et al. 1992). All comparisons of map lengths were expressed in Haldane centimorgans (Haldane 1919).

Interval-mapping analysis

Chromosomal locations of the putative QTLs controlling acylsugar accumulation were analyzed by interval mapping (Lander and Botstein 1989) using the computer program MAPMAKER/QTL v.1.1 (Paterson et al. 1988; Lincoln et al. 1992 a). MAPMAKER/QTL assumes that the quantitative data under consideration is normally distributed. However, none of the data sets for the acylsugar traits being considered fit this assumption. A mixture of normal distributions within each genotypic marker class should be expected, rather than normality (Doerge 1993; Doerge and Churchill 1994). When data for a quantitative trait are not normal, the method generally used in the QTL-mapping papers published to-date begins with log transformation of data for normalization. However, it is theoretically not possible to transform a mixture distribution to a single-component distribution (Titterton et al. 1985). Furthermore, problems associated within the trait distribution prevent the distribution of the LOD scores from following a function of a standard chi-square distribution ($df = 1$) (Hartigan 1985; Self and Liang 1987). An issue not commonly discussed is that use of transformation to normalize data also misrepresents the differences among individuals for the trait by pulling the skewed tails of the distribution toward the center, thus reducing one's ability to detect QTLs.

As a point of rising interest in the mapping community, the data for the 144 F₂ plants was analyzed using three methods, and data from the full set of 196 plants was also analyzed by a fourth method:

Method 1. The distributions of each of the four quantitative traits (acylsucroses, acylglucoses, total acylsugars, and mole percent acylglucoses) were transformed to normality using log 10 transformation and analyzed using MAPMAKER/QTL and its LOD threshold default value, 2.4.

Method 2. The original trait data was analyzed without transformation for the four traits using MAPMAKER/QTL, and a LOD threshold of 2.4.

Method 3. The original trait data was analyzed without transformation for the four traits using MAPMAKER/QTL, and empirically derived threshold values obtained under a permutation setting of 1000 (Churchill and Doerge 1994).

Method 4. Fine-scale mapping was performed for the larger set of 196 F₂ plants for the chromosomal regions in which initial analysis under Methods 1 and 2 indicated QTLs. Chromosome-wise 95% ($\alpha = 5\%$) threshold values were calculated using 1000 permutations of the original data (Churchill and Doerge 1994).

For each of these methods, map distances for interval mapping were expressed in Haldane centimorgans. QTLs were identified by LOD-score calculations at each 2-cM increment across each chromosome (Lander and Botstein 1989; Paterson et al. 1991). Maximum-likelihood estimates of both additive (a) and dominance (d) effects were calculated simultaneously during the genome scan for QTLs as performed by MAPMAKER/QTL. Inclusion of chromosome-10 data impeded the calculation of empirically derived thresholds for analysis by Methods 3 and 4, probably due to the extreme skew characteristically found for chromosome 10 in this interspecific cross (Kinzer et al. 1990; Liu 1994). Therefore, these thresholds were calculated using data from 11 chromosomes, excluding chromosome 10.

Results and discussion

Acylsugar accumulation and composition

L. pennellii LA716 accumulates high levels of acylsugars, the greater part of which is composed of acylglucoses (Table 1). In contrast, *L. esculentum* does not accumulate acylsugars, and the low levels of sugar detected represent background levels of the assay. The interspecific F₁ hybrid accumulates levels of acylsucroses similar to that of the *L. pennellii* parent, but less than 10% of the acylglucoses of that parent. As a result, the F₁ hybrid accumulates a much lower total acylsugar level than does the *L. pennellii* parent, and only 50% of the acylsugars of the F₁ hybrid are acylglucoses, compared to 92% in *L. pennellii* LA716.

Table 1 Accumulation of acylglucoses, acylsucroses and total acylsugars in F₂ and control populations

Population		Acylglucoses (nmoles)	Acylsucroses (nmoles)	Total acylsugars (nmoles)
<i>L. esculentum</i> NY ^L p ⁴	Average	39.8 ^a	11.6	51.4
	Range	26.2–57.3 ^a	8.8–16.8	35.0–74.1
F ₁	Average	115.2	133.0	248.2
	Range	107.2–123.9	121.3–139.7	228.5–263.6
<i>L. pennellii</i> LA716	Average	1015.7	84.0	1099.7
	Range	859.2–1118.6	39.8–146.9	899.0–1265.5
F ₂ Population	Average	76.3	116.8	482.3
	Range	14.5–397.4	0–402.4	21.9–619.7

^a The values included for the *L. esculentum* control show background due to the method rather than actual levels of acylsugars accumulated

A wide range of acylsugar accumulation levels is represented in the F_2 (Table 1). Many F_2 plants do not accumulate detectable levels of acylsugars, and so possess values for levels of acylglucoses, acylsucroses and total acylsugars similar to the background values obtained for the *L. esculentum* parent. The maximum acylglucoses level among F_2 plants is 321% of the maximum acylglucoses level for the F_1 , but less than 36% of the maximum acylglucoses level for the *L. pennellii* parent. In contrast, the maximum acylsucroses level among F_2 plants exceeds that of both the F_1 and the *L. pennellii* parent, at 288% and 274%, respectively. As a result, maximum total acylsugars accumulation in the F_2 population is 235% of that of the F_1 , but only approximately 49% of the maximum total acylsugar levels for the *L. pennellii* parent. Therefore none of the F_2 plants has a total acylsugars level close to that of the *L. pennellii* parent.

Since most of the acylsugars accumulated by *L. pennellii* LA716 are acylglucoses, but the F_1 only produces about 50% acylglucoses, it can be deduced that *L. esculentum* contributes gene(s) that affect the mole percent acylglucoses. An interesting feature of the F_2 population is the indication that a major gene(s) affects the mole percent acylglucoses. The F_2 plants fall into two clusters (plants producing $>60\%$ acylglucoses and $<60\%$ acylglucoses, respectively), rather than a random scatter in the plot of total acylsugars versus mole percent acylglucoses (Fig. 1). This parallels the observation that *L. pennellii* accessions fall into two classes – those in which acylglucoses represent either approximately 40 or 80% of the total acylsugars produced (Shapiro et al. 1994). Comparison of the acylsugar production of the interspecific F_1 and the *L. pennellii* parent suggests that the higher mole percent acylglucoses class is a recessive trait contributed by the *L. pennellii* parent. If one considers only the F_2 plants that are clearly acylsugar-accumulating (having greater than 100 nmol/cm² total acylsugars, the lower range of total acylsugar for the F_1 control), segregation for high vs low

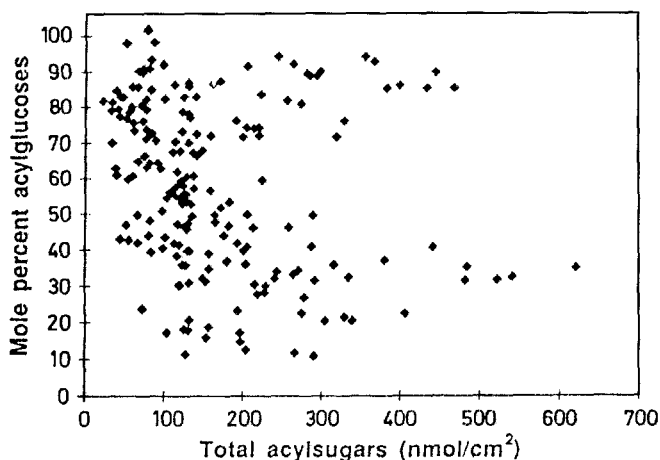
mole percent acylglucoses (12 to 60 vs 65 to 95 mole percent acylglucoses, respectively) also suggests that the ability to produce the higher mole percent acylglucoses class is a recessive trait contributed by the *L. pennellii* parent. However, a more complete genetic analysis would be required to demonstrate monogenic control.

Genome structure and map of probes

Although most of the RFLP markers surveyed show the expected co-dominant segregation for homozygous *L. pennellii* (PP), heterozygous (EP) and homozygous *L. esculentum* (EE) genotypes for the F_2 population, eight of the markers surveyed were of the homozygous *L. pennellii* genotype. The published tomato linkage map (Tanksley et al. 1992) indicates that all of the eight non-segregating markers are located toward the top of chromosome 1 between CT233 and TG71, a region spanning 58.2 cM. The homogeneity of this region for *L. pennellii* alleles in the F_2 population is explained by the fact that the NY^{Lp4} and F₁^{Lp4} progenitors of the F_2 population had EP and PP genotypes, respectively, for all of these markers. Therefore, since no recombination can be detected for mapping within this region, it is not included in the analysis of the genome of the F_2 population.

The mean percentage of the *L. esculentum* genome of the F_2 population was 46.4% ($\pm 1.3\%$ for 95% confidence interval), which is significantly smaller than 50% ($t = -5.52$, $df = 143$, one-tailed $P < 0.001$). However, the frequency distribution of the percent *L. esculentum* genome of the F_2 population was close to the expectation of a normal distribution. The proportion of plants having higher than 50% of the *L. esculentum* genome was 31.3%. The frequency distribution of genotypes is 19.6% EE genome, 53.6% EP genome, and 26.8% PP genome (Fig. 2). The mean percentages of the EE, EP, and PP genomes of the F_2 population were significantly different from the expectations of 25% ($t = -8.12$, $df = 143$, one-tailed $P < 0.001$), 50% ($t = 3.67$, $df = 143$, one-tailed $P < 0.001$), and 25% ($t = 1.93$, $df = 143$, one-tailed $P = 0.055$), respectively. The heterozygosity of the F_2 population was also higher than expected, and the mean percentage of the PP genome was significantly higher than that of the EE genome ($t = -6.56$, $df = 256$, one-tailed $P < 0.001$). The skewing, which favors the *L. pennellii* alleles and increases the average percentage of the F_2 genome that is *L. pennellii*, is well documented in prior studies of *L. esculentum* \times *L. pennellii* F_2 populations (Zamir and Tadmor 1986; Kinzer 1990; Mutschler and Liedl 1994).

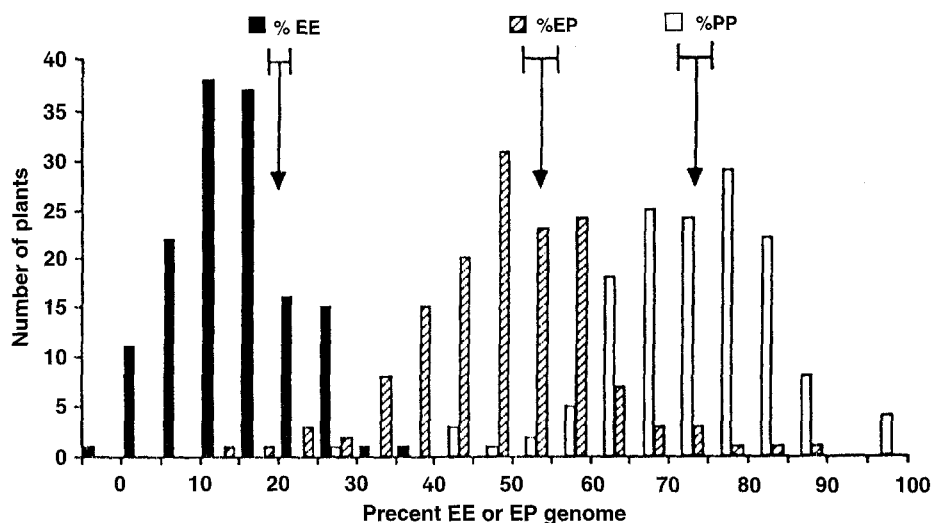
Fig. 1 Scatter plot of total acylsugars versus the mole percent acylglucoses in the F_2 population



Linkage maps

Markers included in the map were selected to cover the entire genome with an average distance between markers of about 20 cM. After the initial data were

Fig. 2 Frequency distribution for the percentage of EE (%EE), EP (%EP) and PP (%PP) genotypes in the genome of the F_2 population. The arrows indicate the means and the horizontal lines attached to the arrows indicate the 95% confidence intervals of the means



analyzed, additional markers were selected from the chromosomal regions showing significant association with total acylsugar levels. Using MAPMAKER/EXP and a LOD score criterion of $LOD > 10.0$, the markers separated into 13 linkage groups. Chromosome 2 was separated into two sublinkage groups, 2-upper, which spans the 8.2 cM between the markers TG31 and TG276, and 2-lower, which spans the 71.9 cM between the markers CT255 and TG141. Markers in the region of this split on chromosome 2 showed extreme skewing, which is most likely the cause of the splitting of this chromosome.

The linkage map of the F_2 population contains 150 markers and 137 intervals that cover 1134.8 cM (Haldane cM) with the spacing between loci ranging from 0.7 to 29.7 cM, not including the region of chromosome 1 for which the F_2 population does not segregate. The relative order of markers is essentially the same as on the published map (Tanksley et al. 1992). The distances between the adjacent markers differed somewhat between our map and the published one, but this is to be expected since the two estimated maps were generated from different populations (sampling effects).

QTL mapping

Five regions, two within the 2-lower portion of chromosome 2 and one each on chromosomes 3, 4 and 11, are associated with acylsugar production by a consensus of the analytical methods used (Table 2, Fig. 3). The major effects on both acylsugars and total acylsugars are associated with the regions on chromosomes 2 and 3. The regions on chromosome 2 are associated with acylsugars by all four of the analytical methods, but cannot be distinguished into two peaks by any of the methods (Fig. 3a). The regions on chromosome 2 are also associated with total acylsugars by all four of the analytical methods. However, in this case, Method 3 indicates that only the distal region is associated with

total acylsugars, effectively separating the regions. The separation of the effects of chromosome 2 into two distinct peaks is further supported by the analysis of mole percent acylglucoses (see below). The proximal region on chromosome 2 has a peak located at, or slightly under, CD35, and the distal region on chromosome 2 has a peak located at, or slightly under, TG204. Assuming there are indeed two regions on chromosome 2, their effects on acylsugars or total acylsugars are remarkably similar. In both regions on chromosome 2, the *L. esculentum* allele is partially dominant to the *L. pennellii* allele, with the heterozygous genotype conditioning slight increases, and the homozygous *L. pennellii* genotype conditioning substantial increases, in acylsugars and total acylsugars. These regions account for a relatively high percentage of the variability observed for these two traits (approximately 11–16%, depending on the analytical method used). It is possible that the two regions detected on chromosome 2 are derived from an ancestral duplication, although the classical and RFLP maps of tomato (Tanksley and Mutschler 1990; Tanksley et al. 1992) include relatively few indications of duplications on this chromosome. The two regions on chromosome 2 also appear to cause a decrease in mole percent acylglucoses. However, the location of the effects of the distal region on mole percent acylglucoses is not located as tightly to TG204 as are the effects on acylsugars and total acylsugars. The effects of the two chromosome-2 regions on mole percent acylglucoses is probably indirect, due to the influence of this region on acylsugars and total acylsugars.

The effects of a region on chromosome 3, with a peak located at or very near TG621, are similar to those of the regions on chromosome 2 in that the *L. pennellii* allele conditions increases in acylsugars and total acylsugars, as well as decreases in mole percent acylglucoses (Fig. 3b). However, the *L. pennellii* allele is at least partially dominant to the *L. esculentum* allele in the chromosome-3 region, such that both the heterozygous and homozygous *L. pennellii* genotypes condition a

Table 2 QTLs identified for acylsugars, acylglucosides, total acylsugars and the mole percent acylglucosides using four analytical methods

QTL ^b	Trait ^c	Method 1 ^a			Method 2, 3 ^a			Method 4 ^a			Summary			
		LOD at peak ^d	% Var at peak ^e	LOD at peak ^d	% Var at peak ^e	LOD at peak ^d	% Var at peak ^e	LOD at peak ^d	% Var at peak ^e	Method 4 threshold	Effect of Lp het. ^f	Effect of Lp homo. ^f	Gene action ^g	
2A	ASUC	2.84	8.7	4.96	14.7	3.98	13.2	5.89	2.24	13.86	(20.79)	78.70	(77.00)	Le is partially dominant to Lp.
	TAS	2.55	7.8	3.73	11.3	3.55	11.1	4.91	2.18	34.15	(32.32)	110.04	(104.02)	Le is partially dominant to Lp.
	%AGLC	-	-	-	-	3.70	5.8	2.44	2.17	-	(-6.00)	-	(-16.31)	Le is partially dominant to Lp.
2B	ASUC	4.40	13.6	5.05	15.6	3.98	16.6	7.10	2.24	15.86	(21.37)	84.42	(86.16)	Le is partially dominant to Lp.
	TAS	3.53	10.7	4.31	12.9	3.55	14.7	6.58	2.18	18.96	(30.86)	109.72	(117.48)	Le is partially dominant to Lp.
	%AGLC	-	-	2.53	7.8	3.70	6.8	3.00	2.17	-4.54	(-8.31)	17.85	(-17.90)	Le is partially dominant to Lp.
3	ASUC	3.55	11.7	2.62	8.1	3.98	6.7	2.94	1.83	55.03	(41.56)	86.18	(68.08)	Lp is partially dominant to Le.
	TAS	3.97	12.3	3.14	9.8	3.55	7.9	3.44	1.86	93.31	(63.07)	139.83	(106.24)	Lp is partially dominant to Le.
	%AGLC	-	-	-	-	3.70	6.4	2.76	1.65	-	(-19.08)	-	(-14.39)	Lp is dominant to Le.
4	ASUC	4.17	13.8	-	-	3.98	6.0	2.25	1.72	-	(38.92)	-	(2.77)	Heterosis?
	AGLC	-	-	2.41	7.4	4.34	9.2	4.13	1.72	19.55	(30.52)	57.08	(64.42)	Lp and Le co-dominant
	TAS	3.24	10.3	-	-	3.55	7.0	2.89	1.81	-	(66.84)	-	(66.24)	Lp is dominant, no additivity.
11	%AGLC	-	-	2.41	9.2	3.70	4.8	1.87	1.77	-13.47	(7.12)	1.44	(5.18)	Situation unclear
	ASUC	5.07	17.7	2.73	9.6	3.98	8.8	3.42	1.94	11.16	(7.98)	-47.00	(-37.44)	Le is partially dominant to Lp
	AGLC	2.54	8.4	-	-	4.34	7.2	2.86	2.03	-	(25.62)	-	(60.08)	Le is partially dominant to Lp
	%AGLC	5.20	17.8	6.57	22.2	3.70	17.7	7.17	1.83	7.47	(5.40)	30.30	(20.36)	Le is partially dominant to Lp

^a Analytical methods 1 to 4 as described in Materials and methods

^b QTLs located: the proximal (2A) and distal QTLs on chromosome 2-lower, and the QTLs on chromosomes 3, 4, and 11

^c Traits: ASUC = acylsugars, AGLC = acylglucosides, TAS = total acylsugars, %AGLC = mole percent acylglucosides

^d Threshold for Methods 1 and 2 is 2.4; empirically derived thresholds for Methods 3 and 4 are presented in the table

^e The percentage of the trait variance accounted for by the QTL

^f For effects of Lp heterozygous and homozygous conditions on each of the traits, the numbers presented are for Method 2, 3 (without parenthesis) and Method 4 (with parenthesis)

^g Allele action column presents conclusions on possible allele action based on the data in the effects of Lp het. and Lp homo. columns

substantial increase in acylsucroses or total acylsugars, as well as a decrease in mole percent acylglucoses. The region accounts for 7 to 12% of the variability observed for the acylsucroses or total acylsugars, depending on the analytical method used, and approximately 6% of the variability observed for the mole percent acylglucoses.

The major effect of the chromosome-4 region, with its peak located near TG483, appears to be on acylglucoses, which is associated with the region by Method 2 and Method 4 (Fig. 3 c). The *L. esculentum* allele is either partially dominant or co-dominant to the *L. pennellii* allele, such that heterozygous and homozygous *L. pennellii* genotypes condition moderate and substantial increases, respectively, in acylglucoses. The region accounts for approximately 7 to 9% of the variability observed for the acylglucoses, depending on the analytical method used. The presence and type of effects due to the chromosome-4 region on other aspects of acylsugar production is less clear. The chromosome-4 region may also have some effect, possibly indirect, on the mole percent acylglucoses. However the LOD values for this trait are only slightly over the thresholds, and the action of the alleles is not clear as to direction and dominance. Similarly, the chromosome-4 region may have some effect on acylsucroses and total acylsugars. However this effect was only detected by Methods 1 and 4, and the LODs for Method 4 are considerably lower than that for acylglucoses, and there is no agreement as to the direction of the effects and dominance of the *L. pennellii* allele. Again, the effects of the chromosome-4 region on acylsucroses and total acylsugars may be indirect, due to the effect of this region on acylglucoses.

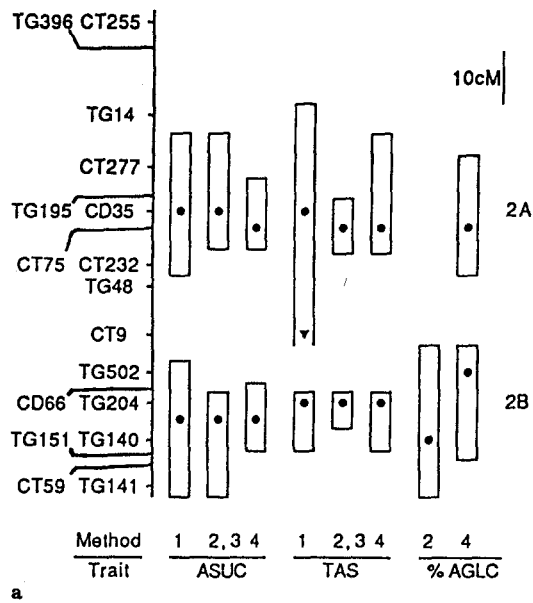
The region on chromosome 11 between TG400 and TG286, with its peak located between these markers and slightly above TG286, is strongly associated with the mole percent acylglucoses by all four of the analytical methods (Fig. 3 d). In this region, the *L. pennellii* allele is partially dominant to the *L. esculentum* allele, such that the heterozygous and homozygous *L. pennellii* genotypes condition slight and substantial increases, respectively, in the mole percent acylglucoses. This is clearly the strongest of the associations detected, with LOD scores of 5.2 to 7.2 and the regions accounting for 17.7 to 22.2% of the variability observed, depending on which analytical method was used. The distal peak of the region on chromosome 2 and the region on chromosome 4 were also associated with the mole percent acylglucoses by Method 2, and both peaks of the region on chromosome 2 (separately) and the region on chromosome 4 were associated with the mole percent acylglucoses by Method 4. However, the effects of the chromosome 2 and 3 regions on the mole percent acylglucoses are smaller than those of the chromosome 11 region and/or negative (reducing the mole percent acylglucoses), and result in much lower LOD scores than the LODs of these same regions for acylsucroses and total acylsugar levels. The effects of the chromosome 2 and 3 regions on the mole percent acylglucoses could be indirect, through

the effects of these regions increasing acylsucroses levels. Therefore the region on chromosome 11 is the only one that appears to fill the expectations for a region in which the homozygous *L. pennellii* genotype conditions distinctly higher levels of the mole percent acylglucoses.

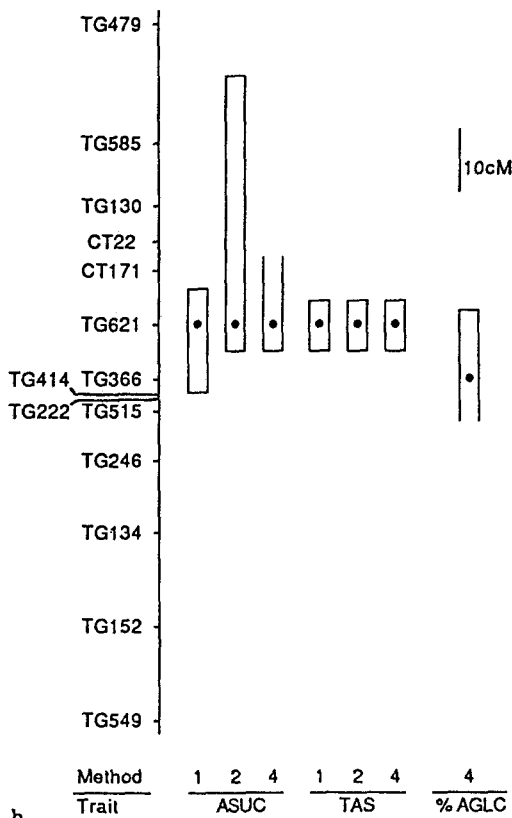
Three other regions were identified by at least one of the analytical methods as being associated with acylsugar accumulation. A region at the end of the short arm of chromosome 6 was associated with the mole percent acylglucoses by Method 1, and with acylsucroses by Method 2. In addition, a region on the end of the short arm of chromosome 9 was associated with acylsucroses by Method 2. In both of these cases, the regions are very small, are at the ends of the chromosomes, and have LODs just over the thresholds, making it likely that these are not valid QTLs and in fact result from the expected 5% false indications of a QTL (type-I error). A small region at the middle of chromosome 8 was identified only by Method 4 as being associated with acylsucroses, acylglucoses, and total acylsugars. Again, the LODs were just over the thresholds, and the percent variability accounted for by the region ranged from 4.4 to 8.0.

Comparison of analytical techniques

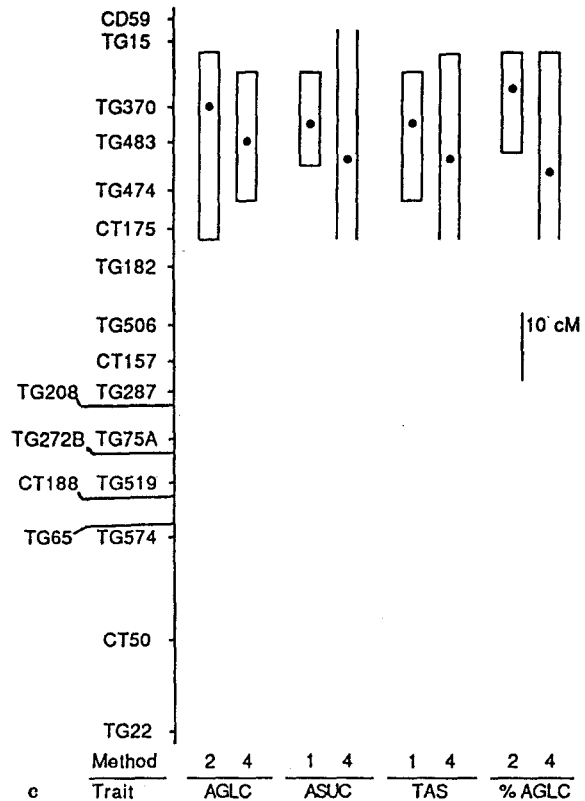
The sole difference between Method 1 and Method 2 is whether data transformation is used in an attempt to create a normal distribution of the quantitative trait, as required by MAPMAKER/QTL. Regions of QTL activity identified by MAPMAKER/QTL are effectively the same for Methods 1 and 2, with Method 2 (i.e., untransformed data) providing higher LOD score values and estimates of percentage variability. Methods 2 and 3 are equivalent in the calculation of LOD scores, but uniquely different in the declaration of significant effects due to QTL activity. The significance thresholds used for Method 3 (empirical permutation) are on average higher than the generally accepted 2.4 value. The fact that the threshold values are higher for Method 3 is not surprising; empirical threshold values are derived specifically for the experimental situation at hand, so as to accurately reflect sample size, as well as environmental variation. In general, it appears that the threshold value 2.4 (Method 2) is less conservative than threshold values developed based on the specifics of the data set. Intuitively, this is sensible, since globally accepted threshold values represent "perfect" conditions (i.e., normally distributed data, no skewing, no environmental variation, and no missing data). Realistically, we know that this data is experiencing non-normality, skewing, and missing marker data, as well as biological and environmental effects. In addition, Method 3 accounts for the problem associated with multiple dependent tests. Since we are testing for QTL activity multiple times across a genome of linked genetic markers (137 intervals with increments of 2 cM), the probability of incorrectly declaring a QTL increases. For example, if



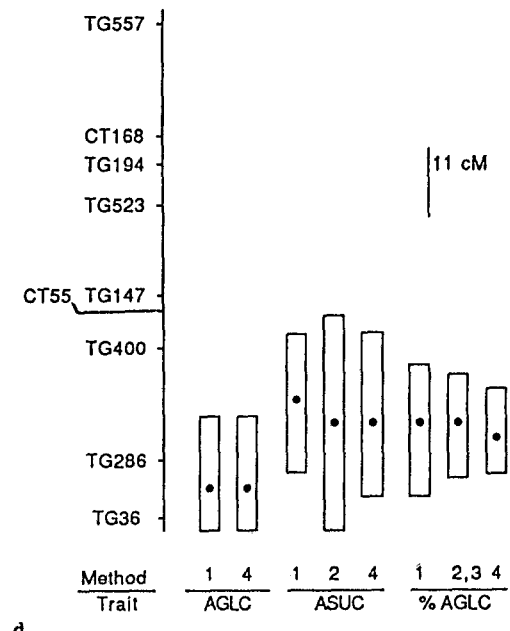
a



b



c



d

we make 100 tests for QTL activity using a 5% ($\alpha = 0.05$) significance level, one would expect to incorrectly declare five QTLs. Using MAPMAKER/QTL under the generally accepted threshold value of 2.4 (Methods 1 and 2) does not take such issues into account.

Method 4 differs from Methods 1 to 3 by the population size used, which is 36% larger than that employed in the other methods. The increased population size is a major advantage for Method 4, but prevents a direct comparison of Method 4 to the other methods. How-

Fig. 3a-d Chromosome maps and locations of QTLs for acylsugar accumulation traits on chromosomes 2, 3, 4, and 11 respectively using analytical Methods 1 to 4. Only the 2-lower portion of chromosome 2 is shown in **a**. *Hollow bars* parallel to the chromosomes indicate the 1-LOD range of a QTL and *solid dots* within these bars indicate the peaks of each QTL. Threshold values and LOD values at the peaks for each of the regions and methods are given in Table 2. Symbols used for the acylsugar traits are: *ASUC* = acylsucroses, *AGLC* = acylglucososes, *TAS* = total acylsugars, %*AGLC* = mole percent acylglucososes. A *single bar* indicates both Methods 2 and 3 (designated 2, 3) in those cases where the LOD surpasses both thresholds. If on a particular chromosome no QTL is detected for a trait by a method, no heading and bar for that trait/Method combination is indicated on the figure. The proximal and distal QTLs identified on chromosome 2 are designated *2A* and *2B* at the right hand side of **a**. The *open ended bar with an arrowhead* in figure **a** indicates that the bar in question extends to the end of the chromosome in the direction of the arrow. *Open ended bars* for Method 4 in **a-d** indicate that the 1-LOD range of the bar extends beyond that point, which is the end of the chromosome segment tested by this method

ever, analysis of the larger population by Method 4 provides further evidence verifying the QTLs identified, since population size is a critical feature in one's ability to detect QTLs (Darvasi et al. 1993). Because full RFLP data were not available for all the plants, the data from the full marker set had to be analyzed in a chromosome-wise fashion. This was done using estimated threshold values derived from chromosomal analysis, which Churchill and Doerge (1994) refer to as chromosome-wise threshold values. Method 4 could be of generalized value, since it provides considerable savings in time and cost for the analysis of very large F_2 populations. In such a situation, one could use a random subset of the F_2 population for initial QTL mapping followed by use of the remainder of the F_2 plants for fine mapping and analysis by Method 4.

Comparison of these results to the regions detected within *Solanum*

The maps of tomato and potato are very similar (Tanksley et al. 1992), and since some accessions of the wild potato *Solanum berthaultii* produce low levels of acylsucroses (King et al. 1988), it is of interest to compare our results with those of Bonierbale et al. (1994), who examined regions associated with the production of acylsucroses in populations derived from crosses of *S. berthaultii*. There is some concordance between the results of the QTL analysis in the two systems. Both mapping efforts found a broad region on chromosome 2, as well as a region on top of chromosome 4, to be associated with acylsugar levels. The differences between the results of the two projects may be due to differences inherent in the two systems. Bonierbale et al. (1994) did not detect the region on chromosome 3 for levels of acylsugars, or the region at the bottom of chromosome 11 where we were able to detect QTL activity for the mole percent acylglucososes. However, if the region we detect on chromosome 11 chiefly affects

levels of acylsugars through its effects on the mole percent acylglucososes, it is not surprising that the region is not detected by Bonierbale et al. (1994), since *S. berthaultii* only produces acylsucroses.

We did not detect the region on chromosome 5 which Bonierbale et al. (1994) have associated with trichome density and acylsugar levels. However, if that region has its effects on acylsugar levels through its effects on the density of acylsugar-secreting trichomes, it is not surprising that we would not detect the region, since this trait does not show much variation within our population. In addition, Bonierbale et al. (1994) show a region toward the top of chromosome 11 for which we see a rise in LOD scores for our data on acylsugar levels, but the LODs never reached threshold values. Finally, we could not assay the top of chromosome 1 due to the homozygosity for that part of chromosome 1, but mapping in another small *L. esculentum* × *L. pennellii* F_2 population (60 plants) which segregated for markers in this region did not indicate the presence of regions associated with levels of acylsugars.

Acknowledgments We thank John Steffens (Dept. of Plant Breeding and Biometry, Cornell University) for advice, use of the ELISA reader for acylsugar assays, and critical reading of the manuscript, Edward D. Cobb (Dept. of Plant Breeding and Biometry, Cornell University) for technical assistance, Ward Tingey (Dept. of Entomology, Cornell University) for use of the area meter, and Gary Churchill (Dept. of Plant Breeding and Biometry, Cornell University) for advice. This work was supported by USDA/Competitive 94-37300-0390 and Hatch Project 149484. R.W. Doerge was supported by USDA/Competitive 94-37300-0323.

References

- Bonierbale MW, Plaisted RL, Pineda O, Tanksley SD (1994) QTL analysis of trichome-mediated insect resistance in potato. *Theor Appl Gen* 87:973-987
- Buta GJ, Lusby WR, Neal JW Jr., Waters RM, Pittarelli GW (1993) Sucrose esters from *Nicotiana glauca* active against the greenhouse whitefly *Trialeurodes vaporariorum*. *Phytochemistry* 32:859-864
- Churchill GA, Doerge RW (1994) Empirical threshold values for quantitative trait mapping. *Genetics* 138:963-971
- Darvasi A, Weinreb A, Minke V, Weller J, Soller M (1993) Detecting marker QTL linkage and estimating QTL gene effect and map location using a saturated genetic map. *Genetics* 134:943-951
- Doerge RW (1993) Statistical methods for locating quantitative trait loci with molecular markers. PhD dissertation. North Carolina State University,
- Doerge RW, Churchill GA (1994) Analysis of molecular marker data. Issues in genetic mapping of quantitative trait loci. In: Proc ASHA/CSSA 2nd Joint Plant Breed Symp. Corvallis, Oregon, pp 27-32
- Doyle JJ, Dickson EE (1987) Preservation of plant samples for DNA restriction endonuclease analysis. *Taxon* 36:715-722
- Feinberg AP, Vogelstein B (1983) A technique for radiolabeling DNA restriction endonuclease fragments to high specific activity. *Anal Biochem* 137:6-13
- Feinberg AP, Vogelstein B (1984) Addendum: a technique for radiolabeling DNA restriction endonuclease fragments to high specific activity. *Anal Biochem* 137:266-267
- Fobes JF, Mudd JB, Marsden MPF (1985) Epicuticular lipid accumulation on the leaves of *Lycopersicon pennellii* (Corr.) D'Arcy and *Lycopersicon esculentum* Mill. *Plant Physiol* 77:567-570

- Gentile AG, Stoner AK (1968) Resistance in *Lycopersicon* and *Solanum* species to the potato aphid. *J Econ Entomol* 61:1152–1154
- Gentile AG, Webb RE, Stoner AK (1968) Resistance in *Lycopersicon* and *Solanum* to greenhouse whiteflies. *J Econ Entomol* 61:1355–1357
- Gentile AG, Webb RE, Stoner AK (1969) *Lycopersicon* and *Solanum* spp. resistant to the carmine and two-spotted spider mite. *J Econ Entomol* 62:834–836
- Goffreda JC, Ave DA, Mutschler MA, Steffens JC, Tingey WM (1989) Aphid deterrence by glucose esters in the glandular trichome exudate of the wild tomato, *L. pennellii*. *J Chem Ecol* 15:2135–2147
- Goffreda JC, Mutschler MA, Steffens JC (1990) Association of epicuticular sugars with aphid resistance in hybrids with wild tomato. *J Am Soc Hort Sci* 117:161–164
- Haldane JBS (1919) The combination of linkage values and the calculation of distance between the loci of linked factors. *J Genet* 8:299–309
- Hartigan JA (1985) A failure of likelihood asymptotics for normal distributions. In: LeCam LM, Olsen RA (eds) *Proc Berkeley Conf*, vol. II pp 807–810
- Hawthorne DM, Shapiro JA, Tingey WM, Mutschler MA (1992) Trichome-borne and artificially applied acylsugars of wild tomato deter feeding and oviposition of the leafminer, *Liriomyza trifolii*. *Entomol Exp Appl* 65:65–73
- Juvik JA, Shapiro JA, Young TE, Mutschler MA (1993) Acylglucosides of the wild tomato *Lycopersicon pennellii* alter behavior and reduce growth and survival of *Helicoverpa zea* and *Spodoptera exigua*. *J Econ Entomol* 87:482–492
- Kennedy BS, Nielsen MT, Severson RF, Sisson VA, Stephenson MK, Jackson DM (1992) Leaf surface chemicals from *Nicotiana* affecting germination of *Peronospora tabacina* sporangia. *J Chem Ecol* 18:1467–1479
- King RR, Calhoun LA (1988) 2, 3-di-*O*- and 1, 2, 3-tri-*O*-acylated glucose esters from the glandular trichomes of *Datura metel*. *Phytochemistry* 27:3761–3765
- King RR, Calhoun LA, Singh RP (1988) 3, 4-di-*O* and 2,3,4-tri-*O*-acylated glucose esters from the glandular trichomes of non-tuberous *Solanum* species. *Phytochemistry* 27:3765–3768
- King RR, Calhoun LA, Singh RP, Boucher A (1990) Sucrose esters associated with glandular trichomes of wild *Lycopersicon* species. *Phytochemistry* 29:2115–2118
- Kinzer S, Schwager S, Mutschler MA (1990) Mapping of ripening-related or -specific cDNA clones of tomato (*Lycopersicon esculentum*). *Theor Appl Genet* 79:489–496
- Lander E, Botstein D (1989) Mapping Mendelian factors underlying quantitative traits using RFLP linkage maps. *Genetics* 121:185–199
- Lander ES, Green P, Abrahamson J, Barlow A, Daly M, Lincoln S, Newburg L (1987) Mapmaker: an interactive computer package for constructing primary genetic linkage maps of experimental and natural populations. *Genomics* 1:174–181
- Lemke CA, Mutschler MA (1984) Inheritance of glandular trichomes in crosses between *Lycopersicon esculentum* and *L. pennellii*. *J Am Soc Hort Sci* 109:592–596
- Liedl BE, Lawson DM, White KK, Shapiro JA, Cohen DE, Carson WG, Trumble JT, Mutschler MA (1995) Acylglucosides of the wild tomato *Lycopersicon pennellii* (Corr.) D'Arcy alters settling and reduces oviposition of *Bemisia argentifolii* (Homoptera: Aleyrodidae). *J Econ Entomol* 88:742–748
- Lincoln S, Lander E (1992) Systematic detection of errors in genetic linkage data. *Genomics* 14:604–610
- Lincoln SE, Daly MJ, Lander ES (1992a) Mapping genes controlling quantitative traits with MAPMAKER/QTL 1.1. Whitehead Institute Technical Report. 2nd edn.
- Lincoln SE, Daly MJ, Lander ES (1992b) Constructing genetic linkage maps with MAPMAKER/EXP version 3.0: a tutorial and reference manual. Research Technical Report 3rd edn.
- Liu S-C (1994) Nature and genetic control of hybrid breakdown and segregation distortion in the interspecific F₂ populations from the cross *Lycopersicon esculentum* × *L. pennellii*. PhD dissertation, Cornell Univ Ithaca, New York
- Liu S-C, Liedl BE, Mutschler MA (1995) Alterations of the manifestations of hybrid breakdown in *Lycopersicon esculentum* × *L. pennellii* F₂ populations containing *L. esculentum* versus *L. pennellii* cytoplasm. *Sexual Plant Reproduction* 8:361–368
- Maniatis T, Fritsch EF, Sambrook J (1982) *Molecular cloning, a laboratory manual*. Cold Spring Harbor Laboratory Press, Cold Spring Harbor, New York
- Minitab (1991) MINITAB. Minitab, Inc. State College, PA
- Mutschler MA (1990) Transfer of *Lycopersicon pennellii* cytoplasm into tomato (*L. esculentum*) does not create cytoplasmic male sterility. *Rep Tomato Genet Coop* 40:25–26
- Mutschler MA, Liedl B (1994) Interspecific crossing barriers in *Lycopersicon* and their relationship to self-incompatibility. In: Williams EG, Clarke AE (eds) *Genetic control of self-incompatibility and reproductive development in flowering plants*. Kluwer Academic Publishers, Dordrecht, the Netherlands, pp 164–188
- Neal JJ, Tingey WM, Steffens JS (1990) Sucrose esters of carboxylic acids in glandular trichomes of *Solanum bertaultii* deter settling and probing by green peach aphid. *J Chem Ecol* 16:487–497
- Paterson AH, Lander ES, Hewitt JD, Peterson S, Lincoln SE, Tanksley SD (1988) Resolution of quantitative traits into Mendelian factors by using a complete linkage map of restriction fragment length polymorphisms. *Nature* 335:721–726
- Paterson AH, Damon S, Hewitt JD, Zamir D, Rabinowitch HD, Lincoln SE, Lander ES, Tanksley SD (1991) Mendelian factors underlying quantitative traits in tomato: comparison across species, generations, and environments. *Genetics* 127:181–197
- Rodriguez AE, Tingey WM, Mutschler MA (1993) Acylsugars produced by type-IV trichomes of *Lycopersicon pennellii* deter settling of the green peach aphid, *Myzus persicae*. *J Econ Entomol* 86:34–39
- Schumacher JN (1970) The isolation of 6-*O*-acetyl-2,3,4-tri-*O*-[(+)-3-methylvaleryl]-D-glucopyranose from tobacco. *Carbohydr. Res* 13:1–8
- Self SG, Liang K (1987) Asymptotic properties of maximum-likelihood estimators and likelihood ratio tests under non-standard conditions. *J Am Stat Assoc* 82:605–610
- Severson RF, Johnson AW, Jackson DM (1985) Cuticular constituents of tobacco: factors affecting their production and their role in insect and disease resistance and smoke quality. *Recent Adv Tobacc Sci* 11:105–174
- Shapiro JA, Steffens JC, Mutschler MA (1994) Acylsugars of the wild tomato *Lycopersicon pennellii* in relation to its geographic distribution. *J Biochem Syst* 22:545–561
- Tanksley SD (1993) Mapping polygenes. *Annu Rev Genetics* 27:205–233
- Tanksley SD, Mutschler MA (1990) Linkage maps of the tomato *Lycopersicon esculentum* (2n = 24). In: *Genetics maps* (5th edn). O'Brien J (ed) Cold Spring Harbor Laboratory Press, Cold Spring Harbor, New York, pp 3–15
- Tanksley SD, Ganai MW, Prince JP, DeVincente MC, Bonierbale MW, Broun P, Fulton TM, Giovanoni JJ, Grandillo S, Martin GB, Messeguer R, Miller JC, Miller L, Paterson AH, Pineida O, Roder M, Wing RA, Wu W, Young ND (1992) High-density molecular linkage maps of the tomato and potato genomes: biological inferences and practical applications. *Genetics* 132:1141–1160
- Titterton DM, Smith AFM, Makov UE (1985) *Statistical analysis of finite mixture distributions*. John Wiley and Sons, N.Y.
- Young ND, Tanksley SD (1989) Restriction fragment length polymorphism maps and the concept of graphical genotypes. *Theor Appl Genet* 77:95–101
- Zamir D, Tadmor Y (1986) Unequal segregation of nuclear genes in plants. *Bot Gaz* 147:355–358